

BLACK & WHITE & COLOR

DIGITAL IMAGING & DARKROOM SERVICES

Customer Price List 2012

Mon - Fri 9 to 5



© Tom Polek

www.BWCLab.com

480-557-8888

ThisLabs4U@aol.com

Est 1987

Welcome to BWC Lab

We started in 1987 as a traditional custom black & white processing and printing lab in Ft. Lauderdale, Florida. Over the years our customers have come to rely on our quality work, customer service and affordable prices.

The photo industry has made huge changes in the last decade. Because of our experience we've adapted to the changes and are now able to offer fine art black & white as well as color digital imaging. Along with those changes has come a new look and a new logo to better express our expanded services. Black & White Lab became Black & White & Color also known as BWC Lab.

We pride ourselves in being a very customer oriented lab. Whether it's a 5x7 or an entire gallery show, we work one on one with all of our customers, amateur and professional alike. We want to ensure that you get exactly the print you envision. We stand behind all our work.

Traditional B&W will always be near and dear to our hearts. We're one of the few labs left that offers black & white darkroom processing and printing. However we're thrilled to be on the cutting edge of digital imaging technology and all the exciting new services we're able to offer. Come in and see for yourself. We look forward to meeting and working with you on your next project.

Tom & Marjan Polek

Black & White Film Processing

We're proud to be one of the few labs still processing true black & white films. All film is hand processed using either D-76 or T-Max RS developers. Utmost care is taken in handling your film to avoid dust and scratches. We do not process any color or C-41 process films.

All negatives are returned in archival clear plastic sleeves for protection and easy identification. Normal Service: in by 10am out by 4pm (dev. only or w/contact sheet) Add 24 hours for Photo CD	35mm 24 exp.	4.50
	35mm 36 exp.	5.50
	120	5.00
	220	7.00
	4x5 sheet film	2.00 per sheet

Photographic Contact Sheet

A contact sheet is an 8 1/2 x 11 piece of photographic paper with images the same size as the negatives. Contact sheets are exposed to yield the best overview of the negatives.

8 1/2 x 11
Contact sheet

8.00
per roll

Digital Photo CD

Photo CD scans are a high quality, medium resolution JPEG file. The files are scanned at 300 dpi and sized to approximately 4x6 for 35mm up to 5x7 for 120 and 4x5 sheet film.

The image files are suitable for viewing on a computer as proofs, printing as 4x6's or 5x7's, for web use, or to be e-mailed. We can offer this service at the time we process your film or from a roll of already developed film.

If you need high resolution scans for large prints or retouching, see the "Film Scans" section on page 14.

35mm roll up to 36 images (one roll per CD)	12.00 per roll
120 roll	12.00 per roll
220 roll	24.00 per roll
4x5 sheet film	12.00 4 sheet minimum 3.00 per sheet after 4
Duplicate 2 nd CD	5.00

B&W Photographic RC Prints

RC prints are the most economical custom photographic enlargements we offer. RC stands for resin coated papers. All prints are enlarger-made, cropped to your specifications, dodged and burned as needed and always dust spotted. We can work with B&W, C-41 B&W or color negatives up to 4x5.

We use Ilford Multigrade IV RC paper in your choice of: • Glossy - up to 11x14 • Pearl • Matte Border Choices: • borderless • 1/8" or 1/4" white border • fine line or rough edge	print size	1 print	2 or more same neg.
	5 x 7 or smaller	7.00	6.00
	8 x 10	10.00	8.00
	8 x 12	18.00	15.00
	11 x 14	18.00	15.00
	16 x 20	38.00	33.00
	20 x 24	55.00	50.00
Normal Service: 2 to 3 working days Rush Service: Next Day +50% Same Day +100%			

B&W Photographic Fiber Base Prints

Fiber Base prints are the highest quality archival photographic enlargements available. These heavy, double weight papers are excellent for gallery, exhibition or portfolio use. When only the best will do, choose Fiber Base. All prints are enlarger-made, tray processed, cropped to your specifications, dodged and burned as needed and always dust spotted.

We use Ilford Multigrade FB Double Weight paper in your choice of: • Glossy - (this is not a high gloss) • Matte - cold tone matte • WTM - warm tone matte Border Choices: • 1/8" or 1/4" white border • fine line or rough edge	print size	1 print	2 or more same neg.
	5 x 7 or smaller	15.00	13.00
	8 x 10	22.00	18.00
	8 x 12	36.00	30.00
	11 x 14	36.00	30.00
	16 x 20	75.00	65.00
Normal Service: 4 to 5 working days Rush Service: 3 days +100% Selenium Toning: +50%			

Premium Digital Prints B&W and Color

Premium Digital Prints are the most economical Fine Art Giclée prints available. They are made on state of the art inkjet printers using archival inks and medium weight papers. These custom prints are made from digital files, scanned negatives or copied artwork. All images are checked and basic corrections for color and tone density are made at no charge. If more extensive corrections are needed additional costs will be incurred.

Premium Inkjet Papers in your choice of:	print size	1 print	2 or more same file
<ul style="list-style-type: none"> • Glossy Finish • Pearl Finish • Matte Finish <p>Prints are available:</p> <ul style="list-style-type: none"> • borderless • 1/8" or 1/4" white borders • fine line black border • rough edge black border (add \$5.00) 	Wallets - 8 per sheet	10.00	10.00
	4 x 6 or smaller	4.00	3.50
	5 x 7	5.00	4.50
	8 x 8	8.00	7.00
	8 x 10	8.00	7.00
	8 x 12	10.00	8.00
	10 x 10	10.00	8.00
	11 x 14	13.00	11.00
	12 x 12	13.00	11.00
	12 x 18	15.00	13.00
	14 x 14	17.00	15.00
	16 x 16	22.00	20.00
	16 x 20	24.00	22.00
	16 x 24	26.00	24.00
	20 x 20	27.00	25.00
	20 x 24	30.00	27.00
	20 x 30	35.00	32.00
24 x 24	36.00	33.00	
24 x 30	40.00	36.00	
24 x 36	48.00	43.00	

Custom sizing and prices available upon request.

Normal Service: 2 to 3 working days
Rush Service: Next Day 50% additional - Same Day 100% additional

Premium Digital Panoramic Prints B&W and Color

Listed here are some of the most popular panoramic sizes of our Fine Art Giclée Premium Digital Prints.

Premium Inkjet Papers in your choice of:	print size	1 print	2 or more same file
<ul style="list-style-type: none"> • Glossy Finish • Pearl Finish • Matte Finish <p>Prints are available:</p> <ul style="list-style-type: none"> • borderless • 1/8" or 1/4" white borders • fine line black border 	4 x 8	8.00	7.00
	4 x 12	9.00	8.00
	4 x 16	12.00	10.00
	6 x 12	10.00	9.00
	6 x 18	13.00	11.00
	6 x 24	18.00	16.00
	8 x 16	13.00	11.00
	8 x 24	20.00	18.00
	8 x 32	25.00	23.00
	10 x 20	22.00	20.00
	10 x 30	28.00	26.00
	10 x 40	38.00	35.00
	12 x 24	24.00	22.00
	12 x 36	35.00	32.00
	12 x 48	50.00	45.00
	16 x 32	35.00	32.00
	16 x 48	55.00	50.00
16 x 64	70.00	64.00	
20 x 40	50.00	45.00	
20 x 60	75.00	69.00	
20 x 80	100.00	90.00	

Custom sizing and prices available upon request.

Normal Service: 2 to 3 working days
Rush Service: Next Day 50% additional - Same Day 100% additional

Digital Fiber Base Prints B&W and Color

<p>Digital Fiber Base Prints are the gold standard in Fine Art Giclée printing. High quality archival double weight fiber prints are created using state of the art inkjet printers with archival inks. These custom prints are made from digital files, scanned negatives or copied artwork.</p> <p>All images are checked and basic corrections for color and tone density are made at no charge. If more extensive corrections are needed additional costs will be incurred.</p> <p>Fiber Base Papers in your choice of:</p> <ul style="list-style-type: none"> • Gold Fiber Silk (warm pearl) • Cold Tone Glossy • Warm Tone Glossy • Bright White Smooth Matte • Watercolor Textured Matte <p>Prints are available:</p> <ul style="list-style-type: none"> • borderless • 1/8" or 1/4" white borders • fine line black border • rough edge black border (add \$5.00) 	print size	1 print	2 or more same file
	5 x 7 or smaller	9.00	7.00
	8 x 8	12.00	10.00
	8 x 10	12.00	10.00
	8 x 12	14.00	12.00
	10 x 10	14.00	12.00
	11 x 14	23.00	20.00
	12 x 12	20.00	18.00
	12 x 18	25.00	22.00
	14 x 14	27.00	24.00
	16 x 16	33.00	30.00
	16 x 20	34.00	31.00
	16 x 24	38.00	35.00
	20 x 20	46.00	42.00
	20 x 24	48.00	45.00
	20 x 30	60.00	55.00
	24 x 24	55.00	51.00
	24 x 30	70.00	64.00
	24 x 36	85.00	79.00
	30 x 30	95.00	90.00
30 x 36	109.00	99.00	
30 x 40	121.00	111.00	
30 x 50	151.00	141.00	
36 x 36	130.00	122.00	
36 x 48	175.00	165.00	
36 x 60	218.00	205.00	
40 x 40	201.00	188.00	
40 x 50	230.00	217.00	
40 x 60	240.00	227.00	
40 x 72	285.00	270.00	
40 x 96	385.00	370.00	
48 x 48	240.00	227.00	
48 x 60	290.00	270.00	
48 x 72	335.00	315.00	
48 x 96	435.00	415.00	

Digital Panoramic Fiber Base Prints B&W and Color

Listed here are some of the most popular panoramic sizes of our Fine Art Giclée Premium Digital Prints.

<p>Fiber Base Papers in your choice of:</p> <ul style="list-style-type: none"> • Gold Fiber Silk (warm pearl) • Cold Tone Glossy • Warm Tone Glossy • Bright White Smooth Matte • Watercolor Textured Matte <p>Prints are available:</p> <ul style="list-style-type: none"> • borderless • 1/8" or 1/4" white borders • fine line black border • rough edge black border (add \$5.00) 	print size	1 print	2 or more same file
	4 x 8	12.00	10.00
	4 x 12	13.00	11.00
	4 x 16	17.00	14.00
	6 x 12	14.00	12.00
	6 x 18	23.00	21.00
	6 x 24	29.00	26.00
	8 x 16	23.00	21.00
	8 x 24	31.00	28.00
	8 x 32	37.00	34.00
	10 x 20	32.00	29.00
	10 x 30	38.00	35.00
	10 x 40	48.00	44.00
	12 x 24	34.00	31.00
	12 x 36	50.00	45.00
	12 x 48	70.00	60.00
	16 x 32	60.00	55.00
	16 x 48	90.00	80.00
	16 x 64	115.00	100.00
	20 x 40	90.00	80.00
20 x 60	120.00	110.00	
20 x 80	160.00	140.00	

Custom sizing and prices available upon request.

Normal Service: 2 to 3 working days

Rush Service: Next Day 50% additional - Same Day 100% additional

Digital Metallic Prints B&W and Color

Metallic Paper represents a breakthrough in inkjet photo papers. The metallic high gloss surface has a shimmering luminescence like no other paper you've seen. It has instant dry and scratch resistant surface properties. These custom prints are made from digital files, scanned negatives or copied artwork. All images are checked and basic corrections for color and tone density are made at no charge. If more extensive corrections are needed additional costs will be incurred.

Metallic paper is 10-mil, 255g medium weight paper. Paper Surface: Glossy Prints are available: • borderless • 1/8" or 1/4" white borders • fine line black border • rough edge black border (add \$5.00)	print size	1 print	2 or more same file
		5 x 7 or smaller	9.00
	8 x 8	12.00	10.00
	8 x 10	12.00	10.00
	8 x 12	14.00	12.00
	10 x 10	14.00	12.00
	11 x 14	23.00	20.00
	12 x 12	20.00	18.00
	12 x 18	25.00	22.00
	14 x 14	27.00	24.00
	16 x 16	33.00	30.00
	16 x 20	34.00	31.00
	16 x 24	38.00	35.00
	20 x 20	46.00	42.00
	20 x 24	48.00	45.00
	20 x 30	60.00	55.00
	24 x 24	55.00	51.00
	24 x 30	70.00	64.00
	24 x 36	85.00	79.00

Custom sizing and prices available upon request.

Normal Service: 2 to 3 working days
Rush Service: Next Day 50% additional - Same Day 100% additional

Digital Metallic Panoramic Prints B&W and Color

Listed here are some of the most popular panoramic sizes of our Fine Art Giclée Digital Metallic Prints.

Premium Inkjet Papers in your choice of: • Glossy Finish • Pearl Finish • Matte Finish	print size	1 print	2 or more same file
Prints are available: • borderless • 1/8" or 1/4" white borders • fine line black border	4 x 8	12.00	10.00
	4 x 12	13.00	11.00
	4 x 16	17.00	14.00
	6 x 12	14.00	12.00
	6 x 18	23.00	21.00
	6 x 24	29.00	26.00
	8 x 16	23.00	21.00
	8 x 24	31.00	28.00
	8 x 32	37.00	34.00
	10 x 20	32.00	29.00
	10 x 30	38.00	35.00
	10 x 40	48.00	44.00
	12 x 24	34.00	31.00
	12 x 36	50.00	45.00
	12 x 48	70.00	60.00
	16 x 32	60.00	55.00
	16 x 48	90.00	80.00
	16 x 64	115.00	100.00
	20 x 40	90.00	80.00
	20 x 60	120.00	110.00
20 x 80	160.00	140.00	

Custom sizing and prices available upon request.

Normal Service: 2 to 3 working days
Rush Service: Next Day 50% additional - Same Day 100% additional

Fine Art Giclée Canvas Prints in B&W and Color

Our Fine Art Giclée Canvas Gallery Wraps are printed on the highest quality archival canvas using archival inks and sealers. These custom prints are made from digital files, scanned negatives or copied artwork. All images are checked and basic corrections for color and tone density are made at no charge. If more extensive corrections are needed additional costs will be incurred.

<p>Gallery Wraps come in your choice of two frame depths, either $\frac{3}{4}$" or heavy duty $1\frac{1}{2}$" bars. Different edge choices are available depending upon the final impact you're looking for.</p> <p>Image Wrap: The image wraps around the edge of the frame. If there is not extra room for the image to wrap then additional image can be created. One way this can be done is by creating a mirror of the image to wrap the sides.</p> <p>Edge Color Wrap: The image is printed the full size of the frame with a slight overlap and a complimentary solid color is added to the edge. There is a soft blend between the solid color and the image. This is recommended when you want the full image to show on the front of the frame.</p> <p>Frame Wrap: The image is printed the full size of the frame with a slight $\frac{1}{4}$" overlap on the edges, the remainder of the canvas is white. This would be used when a canvas is going to be framed. Because the canvas is being dropped into a frame we recommended the $\frac{3}{4}$" frame depth. Frame wraps do not come with hanging hardware.</p>	canvas size	$\frac{3}{4}$ " frame depth	$1\frac{1}{2}$ " frame depth
	8 x 10	29.00	42.00
	8 x 12	33.00	49.00
	9 x 14	39.00	55.00
	10 x 10	33.00	47.00
	11 x 14	40.00	62.00
	12 x 12	38.00	62.00
	13 x 20	61.00	83.00
	14 x 14	50.00	69.00
	16 x 16	55.00	76.00
	16 x 20	63.00	87.00
	16 x 24	71.00	97.00
	18 x 24	72.00	107.00
	20 x 20	83.00	111.00
	20 x 24	86.00	116.00
	20 x 30	97.00	136.00
	24 x 24	97.00	129.00
	24 x 30	109.00	151.00
	24 x 36	139.00	174.00
	30 x 30	127.00	175.00
30 x 36	148.00	185.00	
30 x 40	159.00	238.00	
30 x 50		285.00	
32 x 32		185.00	
32 x 48		275.00	
36 x 36		229.00	
36 x 48		282.00	
40 x 40		266.00	
40 x 48		305.00	
40 x 60		362.00	

Fine Art Giclée Canvas Panoramic Prints in B&W and Color

Our Fine Art Giclée Canvas Panoramic Gallery Wraps are printed on the same high quality archival canvas as you see on the preceding page. This section gives you many of the popular panoramic sizes. We offer two frame depths in your choice of either $\frac{3}{4}$ " or heavy duty $1\frac{1}{2}$ ". To learn more about panoramic prints and aspect ratios see our web site.

<p>Panoramic Gallery Wraps are available with the same edge choices as standard sized wraps.</p> <ul style="list-style-type: none"> • Image Wrap • Edge Color Wrap • Frame Wrap <p>Each canvas is sealed with an archival semi gloss laminate to protect the image from scuffing, cracking and fading.</p> <p>Museum Wraps and Edge Color Wraps in both regular and panoramic sizes come finished and ready to hang. They include finished backs, hangers and bumpers.</p>	panoramic canvas size	$\frac{3}{4}$ " frame depth	$1\frac{1}{2}$ " frame depth
	8 x 16	42.00	59.00
	8 x 24	55.00	76.00
	8 x 32	72.00	102.00
	10 x 20	50.00	69.00
	10 x 30	70.00	86.00
	10 x 40	90.00	128.00
	12 x 24	57.00	92.00
	12 x 36	82.00	122.00
	12 x 48	105.00	173.00
	14 x 28	78.00	105.00
	14 x 42	115.00	160.00
	14 x 56	161.00	219.00
	16 x 32	93.00	129.00
	16 x 48	130.00	180.00
	18 x 36	103.00	147.00
	18 x 54	159.00	218.00
	20 x 40	124.00	197.00
	20 x 60	188.00	296.00
	24 x 48	178.00	235.00
30 x 60	241.00	345.00	

Custom sizing and prices available upon request.

Normal Service: 5 working days
Rush Service: 3 days +100%

Quantity Prints on Premium Digital Inkjet Paper

When your needs call for 25 or more prints from the same digital file then quantity prints are what you're looking for. We can print color or black and white from digital files. Available: Pearl & Matte Finish

	25 - 49	50 - 74	75 - 99	100 - 499	500 +
3 ½ x 5	.60	.50	.40	.30	.25
4 x 6	.75	.65	.55	.45	.35
5 x 7	1.10	.90	.75	.60	.50
8 x 10	1.50	1.25	1.00	.85	.75

Quantity Prints on Photographic RC Paper

When your needs call for 25 or more prints from the same negative then quantity prints are what you're looking for. This service is only available for black and white negatives. Available: Pearl Finish

	25 - 49	50 - 74	75 - 99	100 - 499	500 +
3 ½ x 5	.95	.80	.70	.60	.55
4 x 6	1.50	1.35	1.25	1.10	.85
5 x 7	1.50	1.35	1.25	1.10	.85
8 x 10	2.00	1.75	1.55	1.40	1.25

Digital Cards & Composites

This service is for a single sided composite of image, text and graphics on premium digital paper. This can be for cards, invitations, headshots or composites. All prices include set up, type and layout. Available: Pearl & Matte Finish

5 x 7 or smaller - cut to fit standard envelopes				8x10 Headshot or Promo	
25 prints	65.00	25-49	2.60 ea.	25 prints	75.00
50 prints	85.00	50-74	1.70 ea.	50 prints	95.00
75 prints	105.00	75-99	1.40 ea.	75 prints	120.00
100 prints	120.00	100 +	1.20 ea.	100 prints	135.00

There are a lot of possibilities with this service you can see more examples on our web site or give us a call to discuss your options.

Mounting to Mat Board

This is an economical solution for your display or portfolio needs. The photograph is mounted on high quality archival 4 ply mat board using dry mount tissue. This service is available for both analog and digital inkjet prints.

Flush Mount: mounting to a 4 ply Bright White mat board the same size as the image.	5 x 7 on 5 x 7	7.00
	8 x 10 on 8 x 10	10.00
	11 x 14 on 11 x 14	15.00
	16 x 20 on 16 x 20	25.00

Center Mount: mounting to a 4 ply mat board the next standard size larger.	5 x 7 on 8 x 10	8.00
	8 x 10 on 11 x 14	12.00
	11 x 14 on 16 x 20	18.00
	16 x 20 on 20 x 24	28.00

Available Mat Board Colors: Bright White, Natural White (light creamy color)

Window Matting

We use only the best archival presentation materials for all of our mounting and matting services. Our mat board is 100% cotton fiber, acid free and buffered with calcium carbonate to a pH of 8.0 ± .05. We pride ourselves in offering a quality finished product that will last a life time.

Single Window Mat: the photograph to be matted is attached to the 4 ply backer board. Then a 4 ply window mat is custom cut to your print size and secured over the backer board.	5 x 7 window on 8 x 10 board	12.00
	8 x 10 window on 11x14 board	18.00
	11x14 window on 16x20 board	25.00
	16x20 window on 20x24 board	42.00

Double Window Mat: a double mat is a second window mat cut ¼" larger than the first mat. This gives more depth to the image. Different mat colors may be used.	5 x 7 window on 8 x 10 board	17.00
	8 x 10 window on 11x14 board	25.00
	11x14 window on 16x20 board	36.00
	16x20 window on 20x24 board	56.00

Available Mat Board Colors: Bright White, Natural White (light creamy color), Photo Gray and Black (solid core black)



Film Scans

We use dedicated film scanners to create the best digital file from color, black & white negatives or slides. It's important to know what you will be using your digital file for, so we can create the optimal file for your needs. These scans are most commonly used for digital printing, printing on canvas, retouching and archiving.

Medium Resolution Film Scans

Medium Resolution Scans: sized approximately 8 x 12 at 300 ppi
35mm = 2400 px X 3600 px
2 ¼ and 4x5 sized 3600 px on the longest length

original	file format approx. size	1 - 10	11 - 25	26 +
35mm neg / slide	Jpeg 8MB	5.00	4.00	3.00
35mm neg / slide	Tiff 24MB	10.00	8.00	6.00
2 ¼, 6x7, 645	Jpeg 8MB	7.00	6.00	5.00
2 ¼, 6x7, 645	Tiff 24MB	14.00	12.00	10.00
4 x 5 neg / trans	Jpeg 8MB	9.00	8.00	7.00
4 x 5 neg / trans	Tiff 24MB	18.00	16.00	14.00

High Resolution Film Scans

High Resolution Scans: sized approximately 16 x 24 at 300 ppi
35mm = 4800 px X 7200 px
2 ¼ and 4x5 sized 7200 px on the longest length

original	file format approx. size	1 - 10	11 - 25	26 +
35mm neg / slide	Jpeg 29MB	6.00	5.00	4.00
35mm neg / slide	Tiff 98MB	12.00	10.00	8.00
2 ¼, 6x7, 645	Jpeg 30MB	8.00	7.00	6.00
2 ¼, 6x7, 645	Tiff 100MB	16.00	14.00	12.00
4 x 5 neg / trans	Jpeg 30MB	10.00	9.00	8.00
4 x 5 neg / trans	Tiff 100MB	20.00	18.00	16.00

Normal Service: 2 to 3 working days
Rush Service: Next Day 50% additional - Same Day 100% additional



Print Scans

We use the latest flat bed scanners to create the best digital file from your original print, photograph, document or flat artwork. We can work with originals up to 11x14. Medium resolution is used for posting to the web and basic archiving. High resolution is recommended for digital printing, printing on canvas, retouching and also archiving.

All scans include:

- 5 minutes of basic clean up and dust spotting.
- basic overall tone and color correction.

If additional work is needed beyond what is included please refer to Imaging Services & Retouching (page 16).

Medium Resolution Print Scans

Medium Resolution Scans: scanned 100% at 300 ppi
Scans are saved as 8 bit Tiff files or Jpeg as needed.

original	file dimensions	file size approx.	1 -10	quantity 11+
4x6 or smaller	1200px X 1800px	6MB	4.00	3.00
5x7	1500px X 2100px	9MB	6.00	5.00
8x10	2400px X 3000px	20MB	8.00	6.00
8 ½ x 11	2550px X 3300px	24MB	10.00	8.00
11x14	3300px X 4200px	39MB	12.00	10.00

High Resolution Print Scans

High Resolution Scans: scanned 100% at 300 ppi
Scans are saved as 16 bit Tiff files.

original	file dimensions	file size approx.	1 -10	quantity 11+
4x6 or smaller	1200px X 1800px	12MB	5.00	4.00
5x7	1500px X 2100px	18MB	7.50	6.00
8x10	2400px X 3000px	41MB	10.00	8.00
8 ½ x 11	2550px X 3300px	48MB	12.00	10.00
11x14	3300px X 4200px	79MB	15.00	12.00

Normal Service: 2 to 3 working days
Rush Service: Next Day 50% additional - Same Day 100% additional



Digital Copy Camera Services

We use a high resolution digital camera and custom lighting in our dedicated copy studio. High resolution digital files can be made from photographs larger than 11x14 and flat art work of any size. Copy camera services are used when the original is too large to be scanned with a flat bed scanner.

One time set up fee per order : \$20.00
(regardless of size or number of originals)

All originals are photographed at the highest resolution possible and sized for optimum print ready files. Files are tone and color corrected to match the originals as closely as possible.

Files sized as 300 ppi Tiff or Jpeg files approximately 150MB.

1 - original	2 - 10 originals	11 + originals
\$25.00	\$20.00	\$15.00

Normal Service: 2 to 3 working days

Rush Service: Next Day 50% additional - Same Day 100% additional



Imaging Services & Retouching

Imaging & retouching services covers a wide variety of different choices. We offer old photo restoration which can be anything from simple scratch removal to rebuilding missing areas. We also offer file enhancement, color correction, photo retouching and manipulation of images. If you're not sure or you have something special in mind, contact us to discuss your options. We have over 10 years of Photoshop experience at the expert level so you can count on us to fix any problem you may have.

These services are available from high resolution scans or from digital files that you provide. We can work from JPEG, TIFF or PSD files.

The charge for imaging services, retouching or restoration is \$60.00 per hour. Jobs are priced in 5 minute increments. There is a minimum charge of \$10.00.

If you would like an estimate for any imaging or retouching services please e-mail or FTP upload a copy of the image file with your instructions. We'll give you an estimate within 24 hours.

Having a quality file to work from is key in creating a beautiful final product.

File Preparation

Digital files have made placing orders easier than ever. It's important to properly prepare your files before submitting them with your order to avoid any delays or additional costs. Here are some helpful hints in preparing your files to be submitted for a print order.

Files should be saved in RGB Color Mode at 8 or 16 bits

Grayscale is an acceptable Mode for black & white image files.

Please flatten all layers unless we will be manipulating your file.

File Format: JPEG, TIFF or PSD

File Resolution: 300 ppi (also known as dpi)

Files should be cropped and sized to the desired print specifications before submitting your order. This will help prevent additional resizing charges and delays.

When sending your files be aware of file size limitations.

- E-mail attachments can handle up to 25MB
- FTP Upload on our web site can handle two files with a combined size of 60MB.
- Filezilla FTP Upload can handle all files, all sizes.

Filezilla is FREE FTP software that we recommend using for sending large files. We have a tips page on how to use and download Filezilla on our web site.

www.BWCLab.com

Ordering Information

You have several choices for ordering. You can place your order in person, by mail or online.

We're here Monday thru Friday 9am to 5pm. Come in and see us.

If you're mailing in your order our web site has printable Order Forms. Please print out the order form that applies to the service you want, fill it out and mail it in. Protect film, negatives and originals by using cardboard or a padded envelope.

Digital orders can be placed online using our easy shopping cart system, you can FTP upload files directly or attach files to an e-mail. For more information see our File Preparation page.

If you have any questions about placing an order please feel free to call or e-mail us any time.

www.BWCLab.com

480-557-8888

ThisLabs4U@aol.com

Shipping & Handling

Rates shown are for shipping within the continental United States.

Order Amount	USPS	UPS
\$ 0 - 25.00	3.00	5.50
25.01 - 50.00	3.50	6.00
50.01 - 75.00	4.00	6.50
75.01 - 100.00	4.50	7.00
100.01 - 200.00	5.00	7.50
over 200.00	6.00	8.00
16 x 20 or larger regardless of total	N/A	10.00
Canvas Prints up to 20 x 24 (2 per box)	N/A	10.00
Canvas Prints up to 24 x 36 (2 per box)	N/A	15.00
Canvas Prints up to 30 x 40 (2 per box)	N/A	20.00

- If you do not specify a shipping method we will pick the most economical choice.
- All shipping is trackable.
- UPS cannot deliver to a P.O. Box.
- 16 x 20 or larger premium prints are shipped in a tube. Negatives and smaller prints from the same order are shipped in a flat box or large envelope.
- 16 x 20 Fiber Base or 16 x 20 mounted prints must be shipped in a flat box.
- Canvas prints can be shipped two to a box, shipping is charged per box.
- Express shipping is available upon request, contact us for a rate quote.
- International shipping is also available, contact us for a rate quote.

Hours

Monday thru Friday
9 am to 5 pm

Contact Information

Owners: Tom & Marjan Polek

Phone: 480-557-8888

Fax: 630-733-3748

ThisLabs4U@aol.com

www.BWCLab.com

BWC Lab

1705 W. University Dr. ste 103
Tempe, Arizona 85281

Terms

Payment is due at the time your order is picked up. All mail in orders must include payment information. We accept Master Card, Visa, Discover and American Express. We accept personal checks with proper ID. If you would like to use a Money Order please call in advance for a total on your order.

Orders totalling more than \$200.00 may require a deposit.

Color & Tone Matching

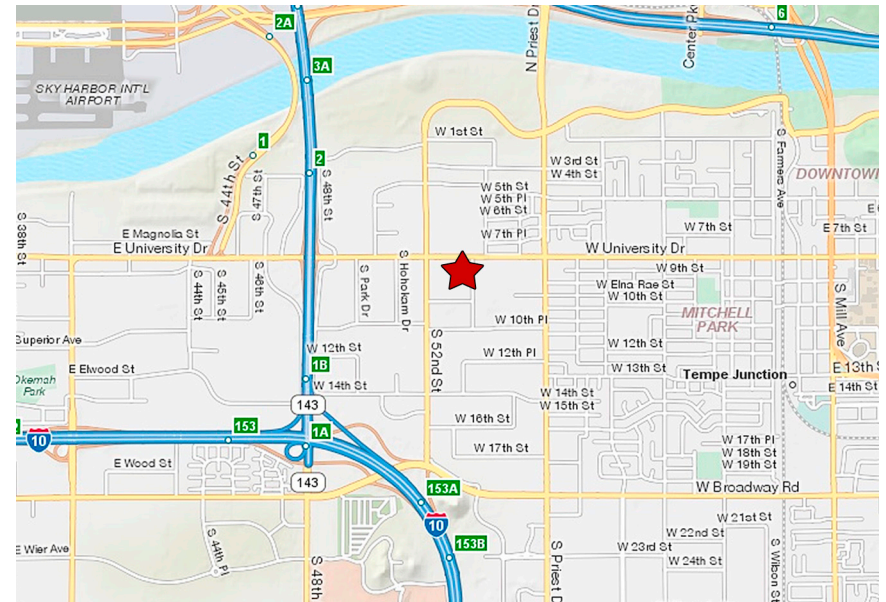
We cannot be responsible for matching colors or tones on new orders or re-ordered prints unless either the original or a sample print accompanies the order. Without an example please trust our experience to make the best print.

Liability

We at BWC Lab strive to give you the best customer service available. In case of loss or damage, we will be liable only to the extent of replacing the lost or damaged material with an equal amount of unexposed film. In the case of digital orders, we will replace damaged prints with the same print. Proof of damage may be required for insurance purposes.

Map / Directions

BWC Lab
1705 W. University Dr. ste 103
Tempe, Arizona 85281



Located 1/2 mile East of the 143 on
University Dr. between 52 St. and Priest Dr.
We're on the South side of the street in the
PS Business Parks Plaza suite 103.